
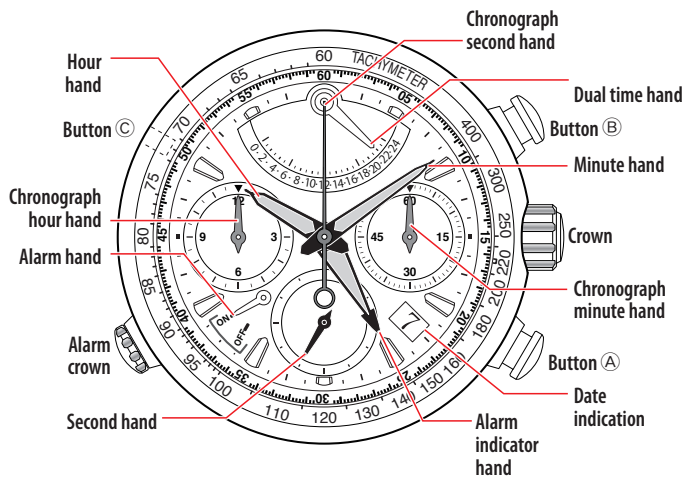


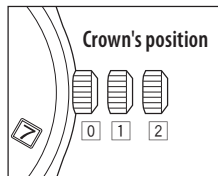
- This watch is solar-powered. Expose the dial to light and use it sufficiently charged.
- To see details of charging time, specifications and operations, refer to the instruction manual:  E260 instruction manual

Component identification



- Actual appearance may differ from the illustration.
- The crown has two positions when pulling it out.
- Refer also to our web page for detail of usage of the scale and bezel on the watch.

(<http://www.citizenwatch-global.com/support/pdf/enhanced/e.pdf>)



Setting the time and date indication

Setting the time

1. Pull the crown out to position **2** when the second hand points **0** second.

The second hand stops.

2. Rotate the crown to set the time.

- Change of date indication shows it just became AM. Take care the time set is AM or PM.
- Move the hands 4 or 5 minutes forward and move them back to the right time to set the time more precisely.

3. Push the crown in to position **0** in accordance with a reliable time source.

The second hand starts moving.

Setting the date indication

- Date indication adjustment is required on the first days of March, May, July, October and December.

1. Pull the crown out to position **1**.

2. Rotate the crown counterclockwise to set the date indication.

- The crown turns freely and the date does not change if the crown is turned to the right.

3. Push the crown in to position **0** to finish the procedure.

Indicating the time of another place

You can set the dual time hand to indicate time of another place.

1. Set the crown to position **0** or **1**.

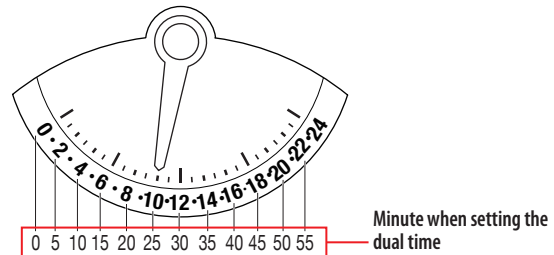
2. Press and release the upper left button **C** to adjust the time.

- Each time you press the button, the dual time hand moves by 1 hour.
- The dual time hand returns to "0" just after proceeding to "24".

3. Pull the crown out to position **2** when the second hand points **0** second.

The second hand stops and the dual time hand points to the current minute.

- While setting the minute of dual time, the dual time hand indicates the minute in 5-minute increments as follows.



The dual time hand shows 25 minutes in this figure.

4. Press and release the upper left button **C** to adjust the minute.

- Each time you press the button, the dual time hand moves by 5 minutes.
- The dual time hand returns to "0" just after proceeding to "24".

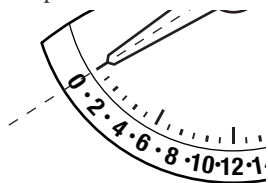
5. Push the crown in to position **0** in accordance with a reliable time source.

The second hand starts moving and the dual time hands returns to time indication.



Checking the reference position

1. Pull the crown out to position **2**.
2. Press and hold the lower right button **A** for 5 seconds or more.
The dual time hand moves to its current reference position.
3. **Checking the reference position**
Correct reference positions:
 - Dual time hand: "0"



When the current reference position is different from the correct one, adjust the position following the steps of "Correcting the reference position".

4. Push the crown in to position **0** to finish the procedure.

Correcting the reference position

1. Pull the crown out to position **2**.
2. Press and hold the lower right button **A** for 5 seconds or more.
The dual time hand moves to its current reference position.
3. Press and release the upper left button **C** to adjust the reference position.
4. Push the crown in to position **0** to finish the procedure.

Resetting the watch - All Reset

1. Pull the crown out to position **2**.
2. Press and release both the upper left button **C** and the lower right button **A** at the same time.
The alarm sound and all reset is executed.
3. Push the crown in to position **0** to finish the procedure.

After All Reset

After All Reset, adjust the reference position and set the time, date, and the dual time hand.

