


- To see details of specifications and operations, refer to the instruction manual:  Y513 instruction manual

Component identification



- Actual appearance may differ from the illustration.
- The crown has two positions when pulling it out.

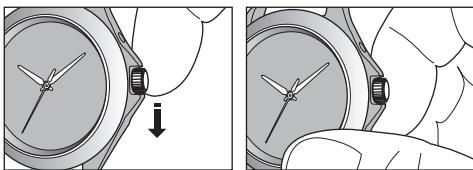
Winding the mainspring

This is an automatic mechanical watch and its mainspring is wound automatically by the oscillating weight moved with swings of your arm.

- If you do not move your arm much, the mainspring may not be wound sufficiently.
- Once the mainspring is wound fully, the watch will run for about 42 hours.
- Keep the mainspring sufficiently wound for comfortable use of the watch.

Winding the mainspring manually

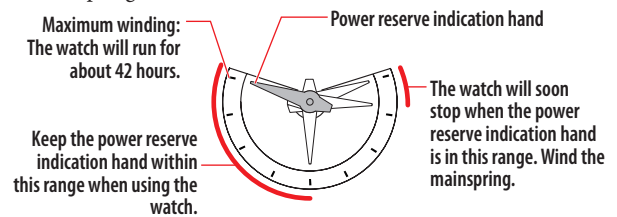
1. Push the crown in to position **0**.
2. Turn the crown clockwise to wind the mainspring.
 - Rub the lower side of the crown down below with the ball of a finger to turn it.



- When the watch stops, turning the crown about 65 times will wind the mainspring fully.
- Turning the crown further after full winding up does not damage the mainspring.

Checking power reserve

The power reserve indication hand shows approximate current winding amount of the mainspring.



Setting the time

- Wind the mainspring before setting the time when the watch stops.

1. Pull the crown out to position **2** when the second hand points **0 second**.
The second hand stops.
2. Rotate the crown to set the time.
 - Change of date indication shows it just became AM. Take care the time set is AM or PM.
3. Push the crown in to position **0** in accordance with a reliable time source.

Setting the date

- Do not adjust the date indication while the watch shows 8:00 PM - 2:00 AM. Otherwise, the date indication may change incorrectly thereafter.
- Date indication adjustment is required on the first days of March, May, July, October and December.

1. Pull the crown out to position **1**.
2. Rotate the crown counterclockwise to set the date indication.
3. Push the crown in to position **0** to finish the procedure.